

CERTIFICATE OF LOCATION OF GOVERNMENT CORNER

Northeast Corner of Section 20, Township 108, Range 43, 5th P.M.

STATE OF MINNESOTA, County of Murray

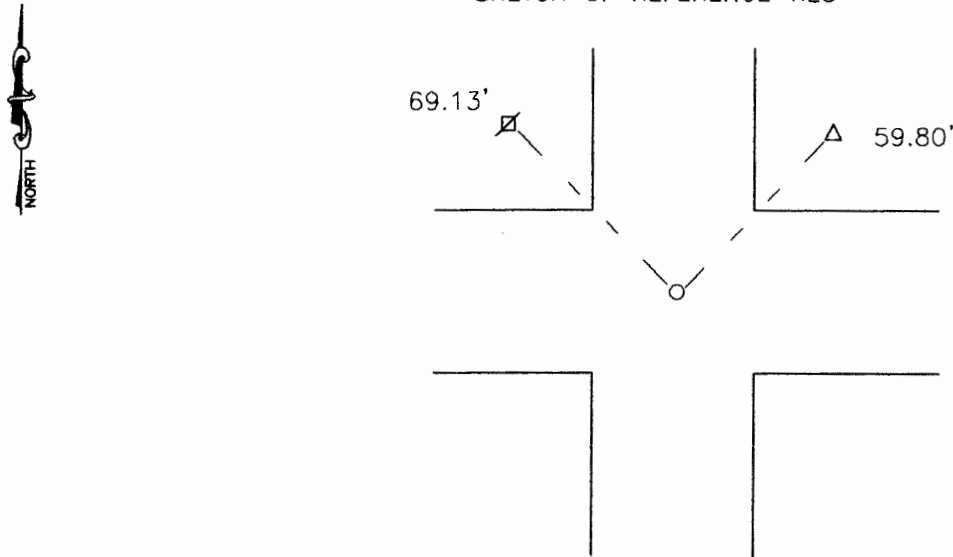
At the corner location shown on the sketch:

On 11-12-01 found a 1/2" iron
DATE

left monument as found, lowered monument, removed monument (explain)

On 11-12-01 placed a 1" iron pipe over the iron
DATE

SKETCH OF REFERENCE TIES



Nail and seal in telephone pedestal pole 59.80' Northeast
 Nail and bottle cap in power pole 69.13' Northwest

Statement of evidence relative to this corner location is on back of page.

I hereby certify that this document and the data contained herein was prepared by me or under my direct supervision.

Lyle C. Manning 11/26/01
SIGNATURE DATE

Registration No. 11943

- Land Surveyor, Professional Engineer
 County Surveyor, County Engineer

OFFICE OF THE COUNTY RECORDER **DEC 27 2001**
 County of _____

I hereby certify that this document was filed in the Co. Recorders office at _____ .M on the _____ day of _____ A.D. 19 _____

County Recorder _____

By _____, Deputy

DOCUMENT NO. _____

Statement of Evidence

J.W. Bishop did the original survey in 1866.

In 1956 a concrete marker was found by the County Highway Department. A rerod was placed above it.

On November 11, 2001 Moseng land surveying found a 1/2" rerod below the road surface. We placed an iron pipe over the rerod.